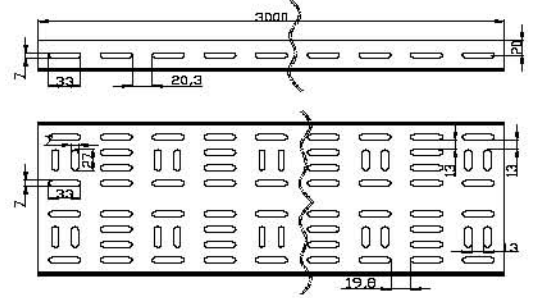
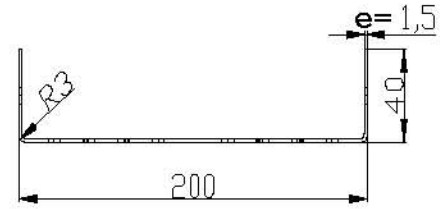
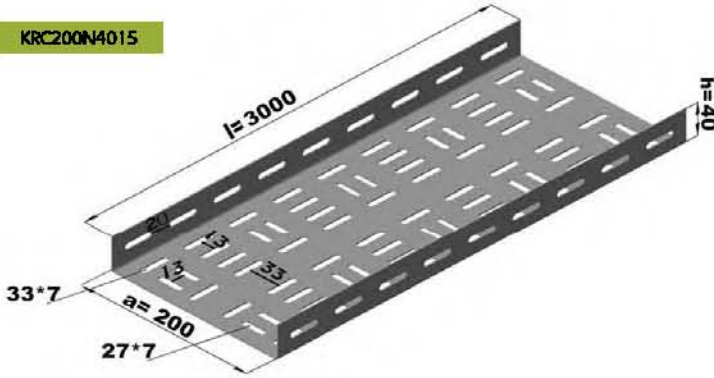


Standart Kablo Kanalları Standard cable trays

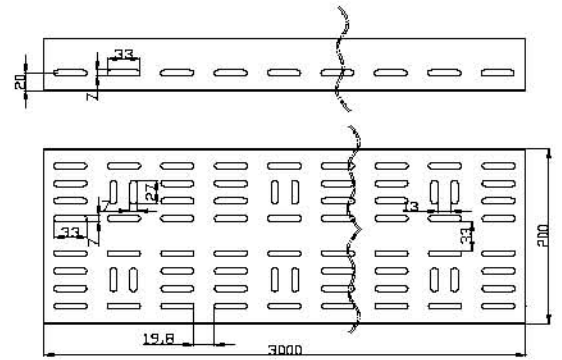
| Sipariş Kodu Order Code | a Geniçlik Width (mm) | h Yükseklik Height (mm) | e Kalınlık Thickness (mm) | l Uzunluk Length (mm) | Ağırlık Weight (kg/m) |
|----------------------------|--------------------------|----------------------------|------------------------------|--------------------------|--------------------------|
| KRC050N4010 | 50 | 40 | 1 | 3000 | 0.903 |
| KRC100N4010 | 100 | 40 | 1 | 3000 | 1.264 |
| KRC100N4015 | 100 | 40 | 1.5 | 3000 | 1.896 |
| KRC150N4010 | 150 | 40 | 1 | 3000 | 1.616 |
| KRC150N4015 | 150 | 40 | 1.5 | 3000 | 2.437 |
| KRC200N4010 | 200 | 40 | 1 | 3000 | 1.987 |
| KRC200N4012 | 200 | 40 | 1.2 | 3000 | 2.384 |
| KRC200N4015 | 200 | 40 | 1.5 | 3000 | 2.979 |
| KRC250N4015 | 250 | 40 | 1.5 | 3000 | 3.521 |
| KRC250N4020 | 250 | 40 | 2 | 3000 | 4.695 |
| KRC300N4015 | 300 | 40 | 1.5 | 3000 | 4.063 |
| KRC300N4020 | 300 | 40 | 2 | 3000 | 5.417 |
| KRC400N4015 | 400 | 40 | 1.5 | 3000 | 5.146 |
| KRC400N4020 | 400 | 40 | 2 | 3000 | 6.861 |
| KRC500N4015 | 500 | 40 | 1.5 | 3000 | 6.230 |
| KRC500N4020 | 500 | 40 | 2 | 3000 | 8.306 |
| KRC600N4015 | 600 | 40 | 1.5 | 3000 | 7.312 |
| KRC600N4020 | 600 | 40 | 2 | 3000 | 9.750 |



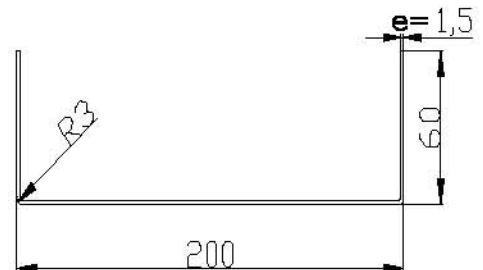
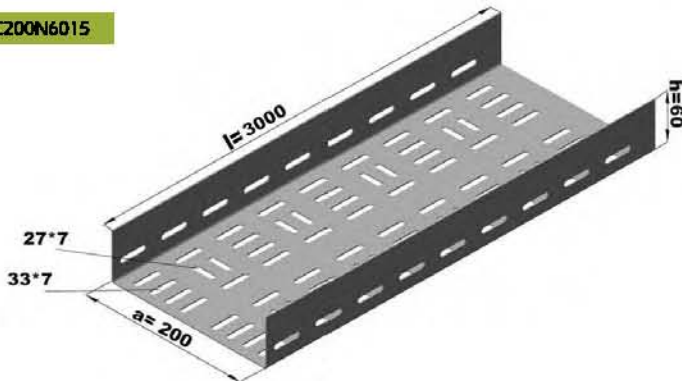
KRC200N4015



| Sipariş Kodu Order Code | a Geniçlik Width (mm) | h Yükseklik Height (mm) | e Kalınlık Thickness (mm) | l Uzunluk Length (mm) | Ağırlık Weight (kg/m) |
|----------------------------|--------------------------|----------------------------|------------------------------|--------------------------|--------------------------|
| KRC050N6010 | 50 | 60 | 1 | 3000 | 1.192 |
| KRC100N6010 | 100 | 60 | 1 | 3000 | 1.553 |
| KRC100N6015 | 100 | 60 | 1.5 | 3000 | 2.330 |
| KRC150N6010 | 150 | 60 | 1 | 3000 | 1.914 |
| KRC150N6015 | 150 | 60 | 1.5 | 3000 | 2.870 |
| KRC200N6010 | 200 | 60 | 1 | 3000 | 2.275 |
| KRC200N6012 | 200 | 60 | 1.2 | 3000 | 2.730 |
| KRC200N6015 | 200 | 60 | 1.5 | 3000 | 3.413 |
| KRC250N6015 | 250 | 60 | 1.5 | 3000 | 3.955 |
| KRC250N6020 | 250 | 60 | 2 | 3000 | 5.273 |
| KRC300N6015 | 300 | 60 | 1.5 | 3000 | 4.491 |
| KRC300N6020 | 300 | 60 | 2 | 3000 | 5.595 |
| KRC400N6015 | 400 | 60 | 1.5 | 3000 | 5.579 |
| KRC400N6020 | 400 | 60 | 2 | 3000 | 7.439 |
| KRC500N6015 | 500 | 60 | 1.5 | 3000 | 6.663 |
| KRC500N6020 | 500 | 60 | 2 | 3000 | 8.884 |
| KRC600N6015 | 600 | 60 | 1.5 | 3000 | 7.745 |
| KRC600N6020 | 600 | 60 | 2 | 3000 | 10.328 |

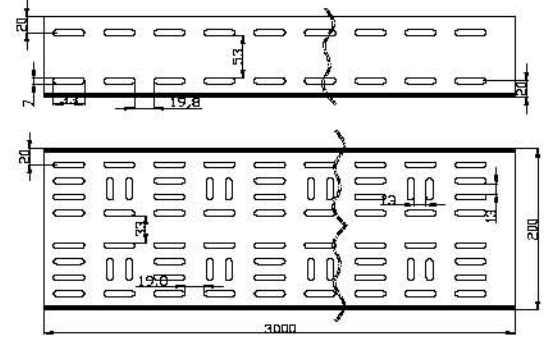


KRC200N6015

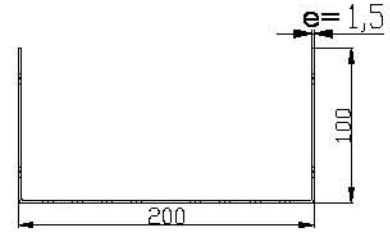
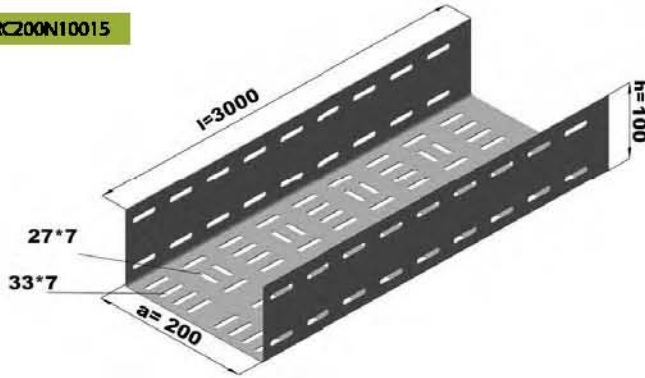


Standart Kablo Kanalları Standard cable trays

| Sipariş Kodu Order Code | a Geniqlik Width (mm) | h Yükseklik Height (mm) | e Kalınlık Thickness (mm) | l Uzunluk Length (mm) | Ağırlık Weight (kg/m) |
|----------------------------|--------------------------|----------------------------|------------------------------|--------------------------|--------------------------|
| KRC100N10010 | 100 | 100 | 1 | 3000 | 2.131 |
| KRC100N10015 | 100 | 100 | 1.5 | 3000 | 3.196 |
| KRC150N10010 | 150 | 100 | 1 | 3000 | 2.492 |
| KRC150N10015 | 150 | 100 | 1.5 | 3000 | 3.737 |
| KRC200N10012 | 200 | 100 | 1.2 | 3000 | 3.423 |
| KRC200N10015 | 200 | 100 | 1.5 | 3000 | 4.279 |
| KRC250N10015 | 250 | 100 | 1.5 | 3000 | 4.821 |
| KRC250N10020 | 250 | 100 | 2 | 3000 | 6.428 |
| KRC300N10015 | 300 | 100 | 1.5 | 3000 | 5.363 |
| KRC300N10020 | 300 | 100 | 2 | 3000 | 7.150 |
| KRC400N10015 | 400 | 100 | 1.5 | 3000 | 6.446 |
| KRC400N10020 | 400 | 100 | 2 | 3000 | 8.595 |
| KRC500N10015 | 500 | 100 | 1.5 | 3000 | 7.530 |
| KRC500N10020 | 500 | 100 | 2 | 3000 | 10.039 |
| KRC600N10015 | 600 | 100 | 1.5 | 3000 | 8.612 |
| KRC600N10020 | 600 | 100 | 2 | 3000 | 11.434 |

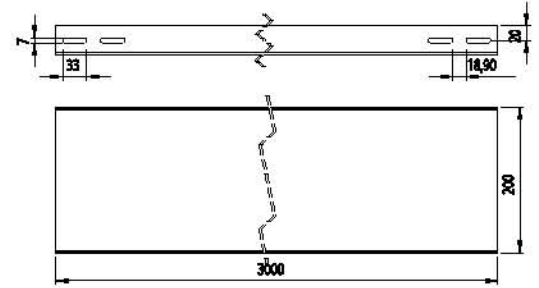


KRC200N10015

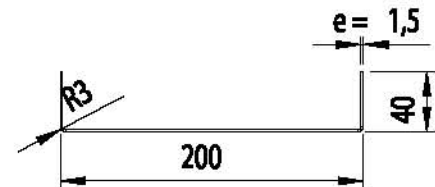
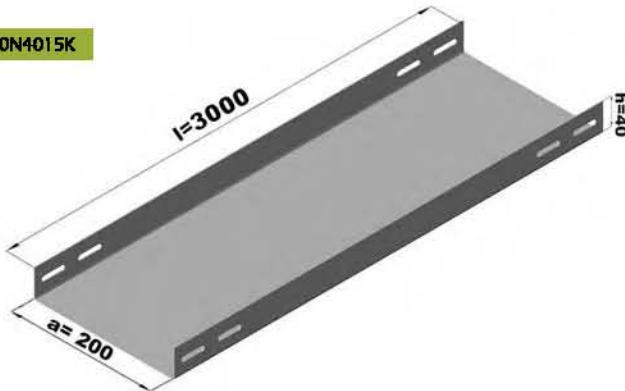


Standart Deliksiz Kablo Kanalları Standard cable trays without holes

| Sipariş Kodu Order Code | a Geniqlik Width (mm) | h Yükseklik Height (mm) | e Kalınlık Thickness (mm) | l Uzunluk Length (mm) | Ağırlık Weight (kg/m) |
|----------------------------|--------------------------|----------------------------|------------------------------|--------------------------|--------------------------|
| KRC050N4010K | 50 | 40 | 1 | 3000 | 0.981 |
| KRC100N4010K | 100 | 40 | 1 | 3000 | 1.374 |
| KRC100N4015K | 100 | 40 | 1.5 | 3000 | 2.061 |
| KRC150N4010K | 150 | 40 | 1 | 3000 | 1.756 |
| KRC150N4015K | 150 | 40 | 1.5 | 3000 | 2.649 |
| KRC200N4010K | 200 | 40 | 1 | 3000 | 2.160 |
| KRC200N4012K | 200 | 40 | 1.2 | 3000 | 2.591 |
| KRC200N4015K | 200 | 40 | 1.5 | 3000 | 3.238 |
| KRC250N4015K | 250 | 40 | 1.5 | 3000 | 3.827 |
| KRC250N4020K | 250 | 40 | 2 | 3000 | 5.103 |
| KRC300N4015K | 300 | 40 | 1.5 | 3000 | 4.416 |
| KRC300N4020K | 300 | 40 | 2 | 3000 | 5.888 |
| KRC400N4015K | 400 | 40 | 1.5 | 3000 | 5.593 |
| KRC400N4020K | 400 | 40 | 2 | 3000 | 7.458 |
| KRC500N4015K | 500 | 40 | 1.5 | 3000 | 6.771 |
| KRC500N4020K | 500 | 40 | 2 | 3000 | 9.028 |
| KRC600N4015K | 600 | 40 | 1.5 | 3000 | 7.948 |
| KRC600N4020K | 600 | 40 | 2 | 3000 | 10.598 |

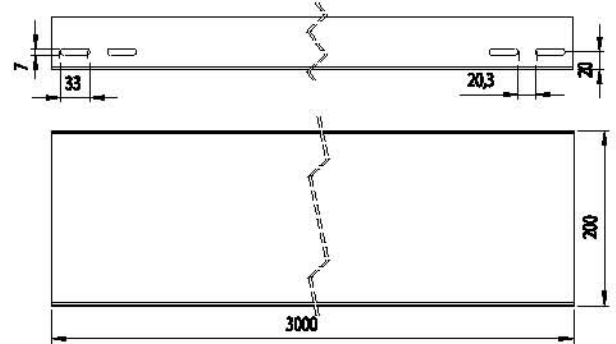


KRC200N4015K

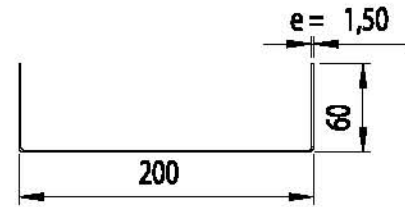
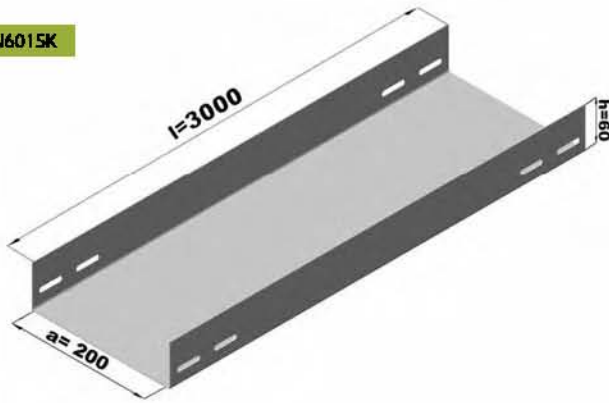


Standart Deliksiz Kablo Kanalları Standard cable trays without holes

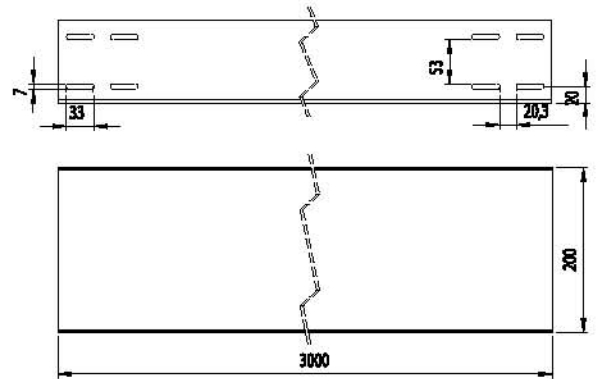
| Sipariş Kodu Order Code | a Geniçlik Width (mm) | h Yükseklik Height (mm) | e Kalınlık Thickness (mm) | l Uzunluk Length (mm) | Ağırlık Weight (kg/m) |
|----------------------------|--------------------------|----------------------------|------------------------------|--------------------------|--------------------------|
| KRC050N6010K | 50 | 60 | 1 | 3000 | 1.295 |
| KRC100N6010K | 100 | 60 | 1 | 3000 | 1.688 |
| KRC100N6015K | 100 | 60 | 1.5 | 3000 | 2.532 |
| KRC150N6010K | 150 | 60 | 1 | 3000 | 2.080 |
| KRC150N6015K | 150 | 60 | 1.5 | 3000 | 3.120 |
| KRC200N6010K | 200 | 60 | 1 | 3000 | 2.473 |
| KRC200N6012K | 200 | 60 | 1.2 | 3000 | 2.967 |
| KRC200N6015K | 200 | 60 | 1.5 | 3000 | 3.709 |
| KRC250N6015K | 250 | 60 | 1.5 | 3000 | 4.298 |
| KRC250N6020K | 250 | 60 | 2 | 3000 | 5.731 |
| KRC300N6015K | 300 | 60 | 1.5 | 3000 | 4.887 |
| KRC300N6020K | 300 | 60 | 2 | 3000 | 6.516 |
| KRC400N6015K | 400 | 60 | 1.5 | 3000 | 6.064 |
| KRC400N6020K | 400 | 60 | 2 | 3000 | 8.086 |
| KRC500N6015K | 500 | 60 | 1.5 | 3000 | 7.242 |
| KRC500N6020K | 500 | 60 | 2 | 3000 | 9.656 |
| KRC600N6015K | 600 | 60 | 1.5 | 3000 | 8.419 |
| KRC600N6020K | 600 | 60 | 2 | 3000 | 11.226 |



KRC200N6015K



| Sipariş Kodu Order Code | a Geniçlik Width (mm) | h Yükseklik Height (mm) | e Kalınlık Thickness (mm) | l Uzunluk Length (mm) | Ağırlık Weight (kg/m) |
|----------------------------|--------------------------|----------------------------|------------------------------|--------------------------|--------------------------|
| KRC100N10010K | 100 | 100 | 1 | 3000 | 2.316 |
| KRC100N10015K | 100 | 100 | 1.5 | 3000 | 3.474 |
| KRC150N10010K | 150 | 100 | 1 | 3000 | 2.708 |
| KRC150N10015K | 150 | 100 | 1.5 | 3000 | 4.062 |
| KRC200N10012K | 200 | 100 | 1.2 | 3000 | 3.721 |
| KRC200N10015K | 200 | 100 | 1.5 | 3000 | 4.651 |
| KRC250N10015K | 250 | 100 | 1.5 | 3000 | 5.240 |
| KRC250N10020K | 250 | 100 | 2 | 3000 | 6.987 |
| KRC300N10015K | 300 | 100 | 1.5 | 3000 | 5.829 |
| KRC300N10020K | 300 | 100 | 2 | 3000 | 7.772 |
| KRC400N10015K | 400 | 100 | 1.5 | 3000 | 7.006 |
| KRC400N10020K | 400 | 100 | 2 | 3000 | 9.342 |
| KRC500N10015K | 500 | 100 | 1.5 | 3000 | 8.184 |
| KRC500N10020K | 500 | 100 | 2 | 3000 | 10.912 |
| KRC600N10015K | 600 | 100 | 1.5 | 3000 | 9.361 |
| KRC600N10020K | 600 | 100 | 2 | 3000 | 12.482 |



KRC200N10015K

